

PRODUCT INSERT
MONOCLONAL ANTIBODIES TO THE HUMAN CD4 ANTIGEN

Product Code	Form	Volume	Tests	Excitation (nm)	Peak Emission (nm)	Matching Isotype Controls	
MHCD0426	Alexa Fluor® 405	0.5 ml	100 min.	405	421	Mouse IgG2a Alexa Fluor 405	Code MG2a26
MHCD0428	Pacific Blue™	0.5 ml	100 min.	405	455	Mouse IgG2a Pacific Blue	Code MG2a28

For information on IVDP (R-PE) or ASR formats of this clone, visit our website at www.invitrogen.com

PRODUCT DESCRIPTION

Mouse monoclonal antibody to the human CD4 antigen

Clone: S3.5

Isotype: Mouse IgG2a

Lot No.: See label

Expiration: See label

Buffer: Phosphate buffered saline (PBS)

Preservative: 0.1% *sodium azide*. Sodium azide is an extremely toxic and dangerous compound particularly when combined with acids or metals. Solutions containing sodium azide should be disposed of properly.

Stabilizer: A highly purified grade of BSA has been added as a stabilizing agent.

STORAGE & HANDLING

Store reagents at 2-8°C. Light exposure should be avoided. Use dim light during handling, incubation with cells and prior to analysis. It is recommended that cells be analyzed within 18 hours of staining. If the reagent is being diluted, it is recommended that only the quantity to be used within one week be diluted.

INTENDED USE

The formats included in this product insert are intended for research use only and should not be used for clinical diagnostic purposes. More information on formats suitable for clinical diagnostic use (IVDP or ASR) can be found at www.invitrogen.com, or by calling Invitrogen's Technical Services Department.

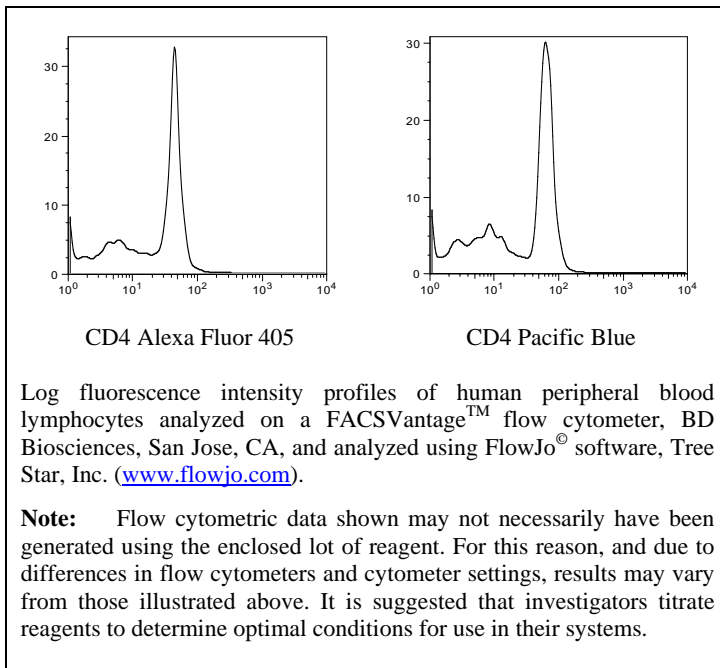
PRODUCT CHARACTERIZATION

Antigen Specificity: According to the literature this antibody recognizes the CD4 antigen also known as T4 and L3T4¹. CD4 serves as a co-receptor during T cell activation through the binding of MHC Class II molecules. CD4 is also the receptor for HIV. CD4 is expressed on helper T cells, thymocyte subsets and to a lesser extent on peripheral blood monocytes.

Leukocyte Workshop Status: Leukocyte Typing V

PRODUCT QUALITY CONTROL

Each lot is tested by flow cytometry using human peripheral blood leukocytes (PBL). Based on this testing it is recommended that 5 µl of antibody be used per 1 x 10⁶ cells in a 100 µl staining volume. Because conditions may vary, it is suggested that each investigator determine the optimal amount of antibody to be used for each application.



REFERENCES:

- Schlossman, S. F., L. Boumsell, W. Gilks, J. M. Harlan, T. Kishimoto, C. Morimoto, J. Ritz, S. Shaw, R. Silverstein, T. Springer, T. F. Tedder, and R. F. Todd eds. 1995. *Leukocyte Typing V*. Oxford University Press Inc., New York.
- Reinherz, E. L., P. C. Kung, G. Goldstein, and S. F. Schlossman. 1979. *Proc. Natl. Acad. Sci. USA* 76: 4061.
- Biddison, W. E., P. E. Rao, M. A. Talle, G. Goldstein, and S. Shaw. 1983. *J. Immunol.* 131: 152.
- Maddon, P. J., D. R. Littman, M. Godfrey, D. E. Maddon, L. Chess, and R. Axel. 1985. *Cell* 42: 93.
- Dagleish, A. G., P. C. L. Beverly, P. R. Clapham, D. H. Crawford, M. F. Greaves, and R. A. Weiss. 1986. *Nature* 312: 763.
- McDougal, J. S., M. S. Kennedy, J. M. Sligh, S. P. Cort, A. Mawie, and J. K. A. Nicholson. 1986. *Science* 231: 382.
- McDougal, J. S., J. K. A. Nicholson, G. D. Cross, S. P. Cort, M. S. Kennedy, and A. C. Mawie. 1986. *J. Immunol.* 29: 37.
- Viellette, A., M. A. Bookman, E. M. Horak, L. E. Samelson, and J. B. Bolen. 1989. *Nature* 338: 257.

* The Alexa Fluor and Pacific Blue dye conjugates in this product are sold under license from Molecular Probes, Inc., and are covered by pending and issued patents.

FOR RESEARCH USE ONLY. . . NOT FOR THERAPEUTIC OR IN VITRO DIAGNOSTIC USE

www.invitrogen.com

Invitrogen Corporation • 542 Flynn Rd • Camarillo • CA 93012 • Tel: 800.955.6288 • E-mail: techsupport@invitrogen.com

PI: L11537

(Rev 12/08) DCC-08-1818

Important Licensing Information - These products may be covered by one or more Limited Use Label Licenses (see the Invitrogen Catalog or our website, www.invitrogen.com). By use of these products you accept the terms and conditions of all applicable Limited Use Label Licenses. Unless otherwise indicated, these products are for research use only and are not intended for human or animal diagnostic, therapeutic or commercial use.